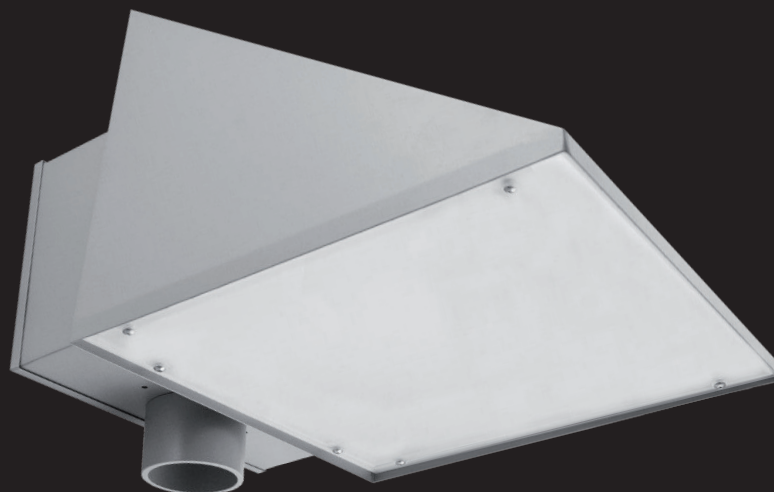
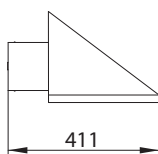
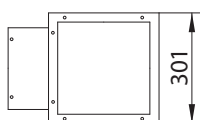


## OIL POLE LED



Pole mounted IP54 outdoor LED luminaire. Body is made of aluminium and stainless steel and is available in all RAL colours. Light source - Philips, Osram or Tridonic LED module. Standard EVG ballast, DALI or Touch Dali version on request.



Index no.	Lumen output	Wattage	Colour temp.	Colour rendering index	Lifetime	Weight
003389.2500/830	2500 lm	33 W	3000 K	Ra > 80	50,000 h	5,00 kg
003389.2600/840	2600 lm	33 W	4000 K	Ra > 80	50,000 h	5,00 kg

IP54 230 V  
50 Hz

