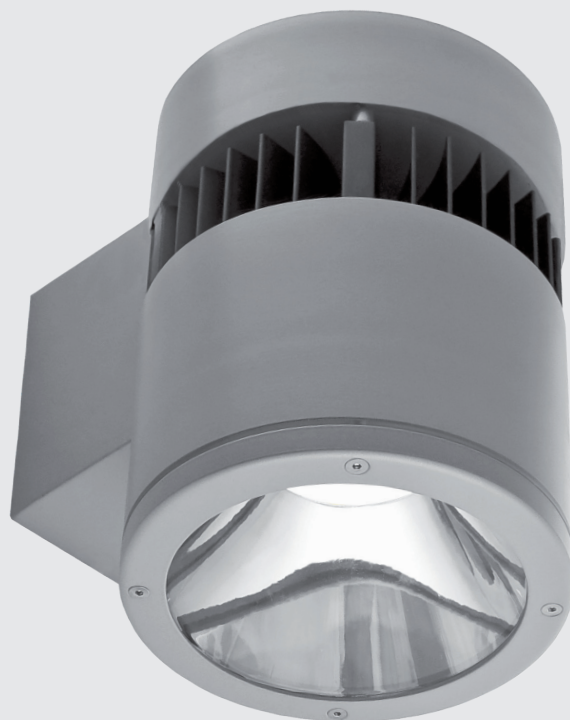
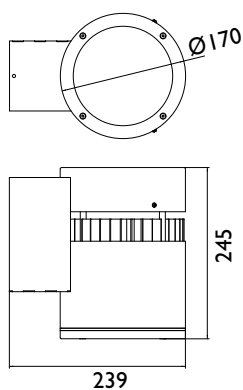


FORTIMO WALL 170 DN



Wall mounted IP54 LED luminaire. Body is made of aluminium and it is available in all RAL colours. Light source - Philips, Osram or Tridonic LED module. Standard EVG ballast, DALI or Touch Dali version on request.



Index no.	Lumen output	Wattage	Colour temp.	Colour rendering index	Lifetime	Weight
003279.1100/830	1100 lm	12 W	3000 K	Ra > 80	50,000 h	2,65 kg
003279.1100/840	1100 lm	12 W	4000 K	Ra > 80	50,000 h	2,65 kg
003279.2000/830	2000 lm	20 W	3000 K	Ra > 80	50,000 h	2,65 kg
003279.2000/840	2000 lm	20 W	4000 K	Ra > 80	50,000 h	2,65 kg
003279.3000/830	3000 lm	30 W	3000 K	Ra > 80	50,000 h	2,65 kg
003279.3000/840	3000 lm	30 W	4000 K	Ra > 80	50,000 h	2,65 kg

* Different lumen output or wattage available on request.

* System power consumption (LED module & driver) depends on components used. Contact us for detailed information.

