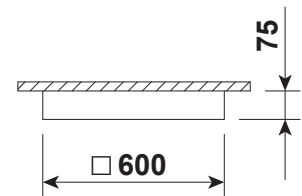


COWI SURF LED SR

Surface mounted LED luminaire with Philips LED modules, Xitanium SR Dali 2.0 standard driver and EasyAir sensor is designed for modular ceilings. Luminaire is also available in suspended version - details below.

Body is made of steel and aluminium, standard white, other RAL colours on request. Two types of diffusers available: Microprismatic [MPR] or white PMMA Acrylic diffuser [WD]



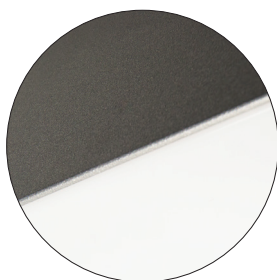
Luminaire is equipped with EasyAir Sensor:
 Communication between luminaires without wires
 Easy smartphone commissioning
 Enables gateway data readout
 Xitanium SR interface (based on DALI 2.0)



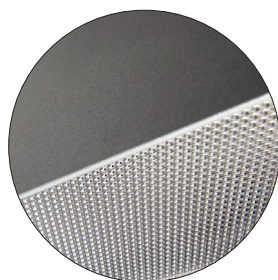
Index no.	LED output [lm]	LED Power [W]	Colour temp. [K]	Colour tolerance [MacAdam]	CRI	Lifetime [h]	Type of diffuser	Length / Size [mm]	Type of installation	Driver
6261.SR.5000.830	5000	36	3000	3	Ra > 80	50.000	MPR + H	600 x 600	surface mounted	Xitanium SR
6261.SR.5000.840	5000	36	4000	3	Ra > 80	50.000	MPR + H	600 x 600	surface mounted	Xitanium SR
6261.SR.5000.830	5000	36	3000	3	Ra > 80	50.000	ALT	600 x 600	surface mounted	Xitanium SR
6261.SR.5000.840	5000	36	4000	3	Ra > 80	50.000	ALT	600 x 600	surface mounted	Xitanium SR

* Different lumen output or wattage available on request.
 * Different size or mounting for special ceiling systems on request.

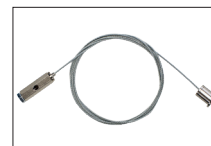
[WD] diffuser



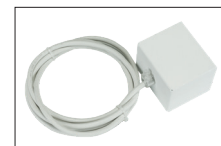
[MPR] diffuser



Accessories



6247.15



6564.15

Index no.	Steel wire suspension
6247.15	single 1,5 m long suspension set for OLN 600 or COWI SURF luminaire - 4 pcs. Per luminaire needed.
6564.15	1,5 m long transparent power cable with ceiling base and terminal block