

# PLAFO 900 LED



Surface mounted LED luminaire.

<b>Mounting:</b>	Directly on the ceiling
<b>Body material:</b>	Steel and aluminium
<b>Colour:</b>	Standard Gray RAL 9006, other RAL colours on request (please add RAL colour after index number)
<b>LED module:</b>	Philips / Osram / Tridonic or equivalent LED module included
<b>Colour temperature:</b>	3000K or 4000K
<b>Colour Rendering Index (CRI)</b>	>80 in standard
<b>Driver:</b>	Electronic driver in standard, DALI on request
<b>Emergency unit:</b>	On request - Standard or DALI 3 hour emergency unit
<b>Movement sensor:</b>	on request
<b>Daylight control sensor:</b>	on request
<b>Operating temperature range:</b>	0°C ... +40°C
<b>IP Class:</b>	IP20 in standard, IP44 on request
<b>Power:</b>	220-240V 50/60Hz
<b>Lighting direction:</b>	Direct lighting - index 3514, 3515, direct / indirect lighting - index 6584.UD, 6585.UD
<b>Reflector type:</b>	Aluminium white
<b>Light distribution:</b>	Symmetric
<b>Diffuser:</b>	White acrylic diffuser [WD] in standard, acrylic frosted [AC], microprismatic [MPR] or any other on request.
<b>General data:</b>	5 Years standard warranty

Different lumen output or wattage available on request

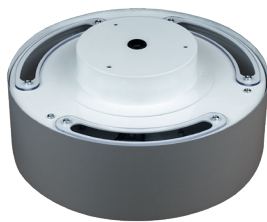
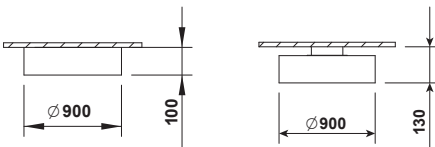
All other technical features such as : Luminaire Efficacy, LOR, Lumen maintenance L/B etc. available in our pricelist

Wattage of products may vary due to constant LED efficacy improvements. Luminous flux & Luminaire Power tolerance +/- 10%.

System power consumption (LED module & driver) depends on components used



Index no.	Lumen output [lm]	Power [W]	Colour temp. [K]	CRI	Lifetime [H]	Warranty [Years]	MacAdam [SDCM]	Weight [kg]
<b>SURFACE MOUNTED</b>								
3515.12000/830	12000	76	3000	Ra > 80	50.000	5	3	10,50
3515.12000/840	12000	76	4000	Ra > 80	50.000	5	3	10,50
<b>SURFACE UP/DN</b>								
6585.UD.1200/830	12000	76	3000	Ra > 80	50.000	5	3	10,50
6585.UD.1200/840	12000	76	4000	Ra > 80	50.000	5	3	10,50



Direct/indirect version